



SUNTECH ENERGY LIMITED

360°LED Lighting & Solar Power Solution Provider



Innovative Green Products

About Us



SIM GROUP

SIM GROUP, a large contributor in manufacturing and economic development of Bangladesh, displays admirable performance in the field of spinning and textile industry.

We entered into business arena as a manufacturer and exporter in the year 2000. Since then we have never looked back. By dint of our hard work and sincerity we have been capable to expand the confidence of highly dignified buyers of United Kingdom, USA and other members of European Union. Now we have a number of factories having 3500 workers and employees, working in an excellent atmosphere.

SIM GROUP has grown from starting fabric manufacturer to an exporter of entire range of fashion. By handling a large number of highly reputed clients and solving their complicated problems to their utmost satisfaction is an ample proof that we are in the right track. All employees in SIM GROUP are facing new challenges daily and facing them boldly. We will be happy to help you find a solution for your textile requirements.

We are producing 100% cotton and blended fabrics of different types to meet the requirements of overseas buyers.

Suntech Energy Limited

Suntech Energy Limited, a concern of SIM Group established in 2012 is a new generation company. It is dedicated to make the latest concepts, technologies, products, services and solutions available in Bangladesh for the greater benefit of using those to the fullest. Suntech Energy represents global names and brands in renewable energy and power conservation with the workforce that possess relevant expertise combined with the logistics. Above all the commitment is to make a difference in this highly potential business sector.

Our Vision

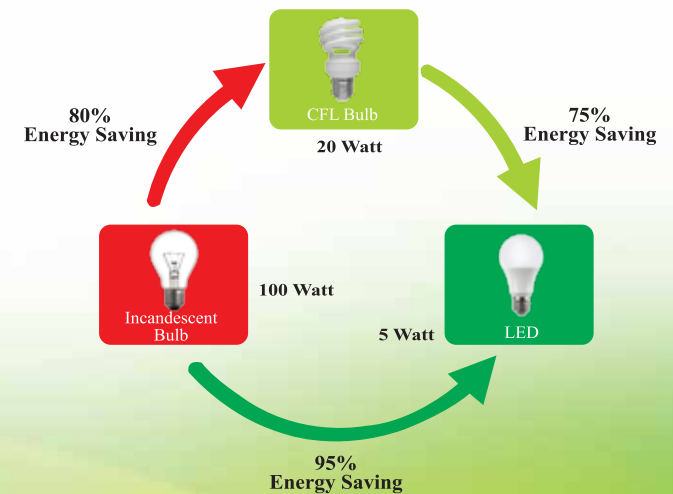
We, at **Suntech Energy Limited** is striving to make Bangladesh more sustainable through innovation. We aim to achieve this by providing customers with quality products, added value and cost reduction. We are committed to be a socially and environmentally responsible organization.

Our Mission

Our mission is to be the leading provider of innovative, environmental-friendly, high quality fixtures and related products to the Bangladeshi commercial, institutional and utility markets. As a recognized Leader in the lighting industry it is our responsibility to deliver superior value to our customers and their clients on a consistent basis. This commitment permeates everything we do, driving us to continuously develop and improve our products and the processes necessary to fulfill today's needs for quality, energy-efficient, eco-friendly lighting solutions.

Comparison Chart

| INCANDESCENT vs CFL vs LED Effectiveness Cost | | | |
|---|--------------|--------------|--------------|
| Description | Incandescent | CFL | LED |
| Light Quantity | 1 PCS | 1 PCS | 1 PCS |
| Life span of each bulb | 1,200 hours | 6,000 hours | 56,000 hours |
| Watts per bulb | 100 Watt | 20 Watt | 5 Watt |
| Cost per bulb | 50.00 TK | 250.00 TK | 350.00 TK |
| KWH of electricity used over 56,000 hours | 5,600 Unit | 1120 Unit | 280 Unit |
| Cost of electricity (@13 per KWH) | 72,800.00 TK | 14,560.00 TK | 3,640.00 TK |
| Bulbs required for 56,000 hours of use | 46 PCS | 9 PCS | 1 PCS |
| Bulbs Expense | 2,300.00 TK | 2,250.00 TK | 350.00 TK |
| Total Cost for 56,000 hours | 75,100.00 TK | 16,810.00 TK | 3,990.00 TK |



LED Tube Light

Description

| | |
|--------------------|---|
| Brand | : SUNTECH |
| Available wattages | : 18w, 20w, 22w, 24w, 26w, 28w |
| Input Voltage | : 95-265V AC |
| LED Light Source | : SMD 2835, 3014 |
| Rated Life | : 56,000 hours |
| Luminous Flux | : 100+ lm per watt |
| Power Factor | : 0.95 |
| Color Temperature | : 2700 – 6500k |
| Efficacy | : 105 |
| CRI | : >80 |
| Lumen Maintenance | : 98% upto 10,000 hours |
| Lamp Body Material | : Frosted fiber and pure aluminium |
| Cover | : Milk White |
| LED Chips | : Epistar (Taiwan) |
| Available Sizes | T8 : 2 ft and 4 ft. (Wall Mounted & T8 RT) T5 : 1ft, 2ft, 3ft and 4ft. T5~T8 : 4ft. |

Features

- Best for **industrial** and **indoor** use
- High Power efficiency > 88% (typical)
- High Luminous efficacy LEDs
- No mercury, no UV and no IR light radiation
- High Heat conducting efficiency, low lumens depreciation, high light purity
- Wide working voltage range, constant flow and pressure



■ SEL/LTL/RT-101



■ SEL/LTL/T5-102



■ SEL/LTL/WM-103



■ SEL/LTL/T5~T8-104

LED Bulb

Description

| | |
|--------------------|---------------------------------|
| Brand | : SUNTECH |
| Available wattages | : 3w, 5w, 7w, 9w, 12w, 15w, 20w |
| Working Voltage | : 95-265V AC |
| LED Light Source | : SMD 2835 |
| Rated Life | : 30,000 hours |
| Luminous Flux | : 100+ lm per watt |
| Power Factor | : 0.95 |
| Color Temperature | : 2700 – 6500k |
| Efficacy | : 105 |
| CRI | : >80 |
| Lumen Maintenance | : 98% upto 10,000 hours |
| Lamp Body Material | : Frosted Fiber and Plastic |
| Cover | : Milk White |
| LED Chips | : Epistar (Taiwan) |
| Base type | : B22, E27 |
| Bulb type | : Masroom & Pillar Bulb |

Features

- Appropriate for **indoor** usage
- High Lumen Efficient LEDs
- Energy saving and environment friendly
- No mercury, no UV and no IR light radiation
- No pollution of lead and Hg



■ SEL/LB-201



■ SEL/LB-202



■ SEL/PLB-203



■ SEL/MLB-204

LED Panel Light

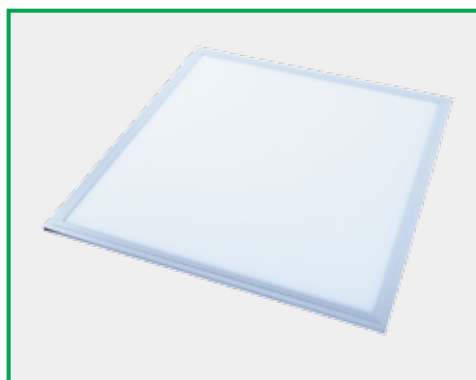
Description

| | |
|--------------------|--|
| Brand | : SUNTECH |
| Available wattages | : 24w, 36w, 40w, 48w, 56w |
| Working Voltage | : 170 – 240V AC, 50/60 Hz |
| Rated Life | : 30,000 Hrs |
| Luminous Flux | : 100+ lm per watt |
| Power Factor | : 0.98% |
| Color Temperature | : 2700 – 6500k |
| Efficacy | : > 105 |
| CRI (Minimum) | : >80 |
| Lumen Maintenance | : 98% up to 10,000 hours |
| Lamp Body Material | : Aluminium Cast, Frosted Fiber, PC diffuser |
| LED Chips | : SMD, Epistar 2835 (Taiwan) |
| Beam angle | : 120° |
| Available versions | : Conceal and Surface |

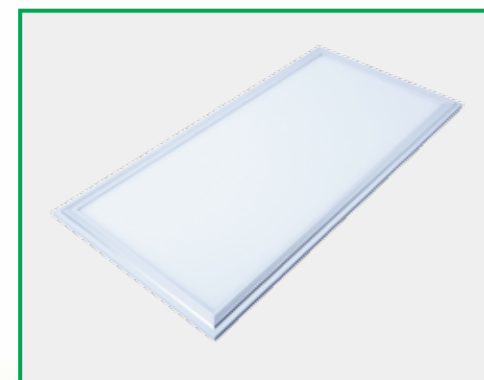
Features

- Appropriate for **indoor** usage
- Cool light can reduce the rise of the ambient temperature
- Energy saving and environment friendly
- Professional appearance with elegant and slim structure
- No mercury, UV and IR light radiation, No heavy metal pollution
- Wide voltage, constant current stable performance

High Heat conducting efficiency, low lumens depreciation, high light



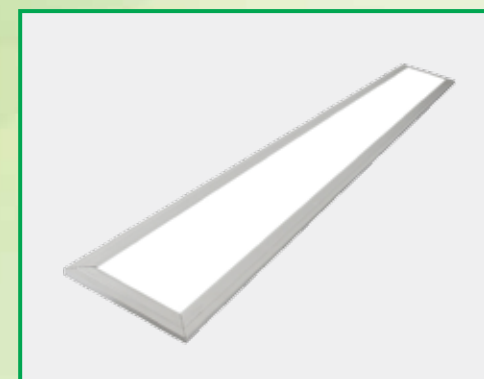
■ SEL/PL-301
Dimension: 600mm x 600mm



■ SEL/PL-302
Dimension: 300mm x 1200mm



■ SEL/PL-303
Dimension: 300mm x 300mm



■ SEL/PL-304
Dimension: 150mm x 1200mm

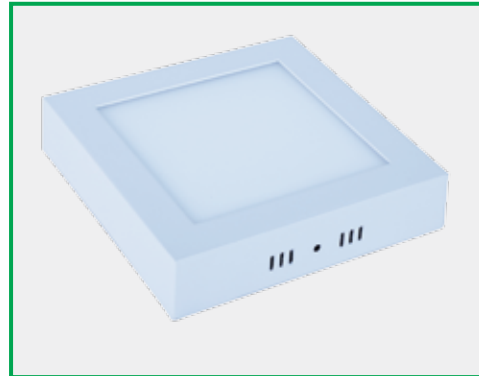
LED Panel Light Surface & Conceal

Description

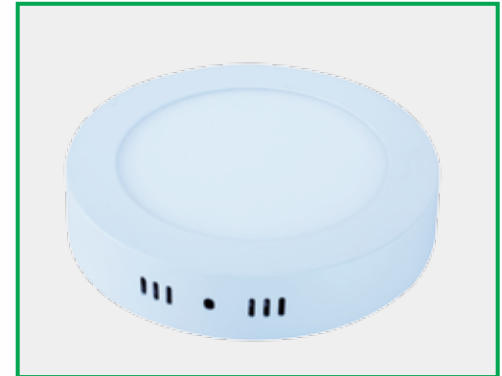
| | |
|--------------------|---------------------------------------|
| Brand | : SUNTECH |
| Available wattages | : 3w, 6w, 7w, 9w, 12w, 15w, 18w, 24w, |
| Working Voltage | : 85-265V AC, 50/60 Hz, AC: 0.65A |
| LED Light Source | : SMD |
| Shapes available | : Round, rectangular |
| Rated Life | : 30,000 Hrs |
| Luminous Flux | : 100+ lm per watt |
| Power Factor | : >.65A |
| Color Temperature | : 2700 – 6500k |
| Efficacy | : > 105 |
| CRI (Minimum) | : >80 |
| Lumen Maintenance | : 98% up to 10,000 hours |
| Lamp Body Material | : Aluminium cast, Frosted Fiber |
| LED Chips | : Epistar (Taiwan) |
| Beam angle | : 120° |

Features

- High Power efficiency > 88% (typical)
- Easy installation, no maintenance needed
- 85% Energy-saving and environment-friendly
- No mercury, no UV and no IR light radiation
- High Heat conducting efficiency, low lumens depreciation, high light purity



■ SEL/PL/SURF-401



■ SEL/PL/SURF-402



■ SEL/PL/CON-403



■ SEL/PL/CON-404

LED High Bay Light

Description

| | |
|-----------------------|-------------------------------------|
| Brand | : SUNTECH |
| Available wattages | : 50w, 100w, 150w, 200w, 300w, 400w |
| Input Voltage | : 85~265V AC |
| LED Light Source | : COB/SMD |
| Rated Life | : 50000 Hrs |
| Luminous Flux | : 110±5 / W |
| Power Factor | : 0.95 |
| Color Temperature | : 6500K |
| CRI | : >80 |
| Lumen Maintenance | : 98% up to 10000 Hrs. |
| Lamp Body Material | : Aluminium |
| LED Chips | : Epistar (Taiwan) |
| Power Supply | : Mean Well/China |
| Beam angle | : 120° |
| Operation Temperature | : -40~500C |
| IP Grade | : IP 54 |

Description

| | |
|--------------------|--|
| Brand | : SUNTECH |
| Available wattages | : 250w, 400w |
| Working Voltage | : 220 – 240 V/50 Hz |
| Ballast type | : Magnetic |
| Replacement Lamp | : 250w/400w MH Lamp (E40) |
| Length (inch) | : 22.3 |
| Width (inch) | : 22.3 |
| Height (inch) | : 23.65 |
| Body | : White die cast aluminium |
| Warranty | : 1 year (Ballast, Capacitor, Igniter) |



■ SEL/LHBL-501



■ SEL/LHBL-502



■ SEL/LHBL-503



■ SEL/LHBL-504

LED Flood Light

Description

| | |
|--------------------|--|
| Brand | : SUNTECH |
| Available wattages | : 10w, 20w, 30w, 50w, 100w, 150w, 200w, 300w, 400w |
| Working Voltage | : 85-265V AC |
| LED Light Source | : COB (Epistar)/SMD |
| Rated Life | : 50,000 hrs |
| Luminous Flux | : 100+ lm/w |
| Power Factor | : ≥ 0.95 |
| Color Temperature | : 3000-6500k |
| CRI | : >80 |
| Lumen Maintenance | : 100% upto 10,000 hrs |
| Lamp Body Material | : Pure aluminium, Tempered glass |
| Beam angle | : 120° |
| IP Grade | : IP 65/66/68 |

Description

| | |
|--------------------|--------------------------------------|
| Brand | : SUNTECH |
| Available wattages | : 50w, 80w, 100w, 200w, 300w |
| Working Voltage | : 85-265V AC 50/60 Hz |
| LED Light Source | : COB (Epistar)/SMD |
| Rated Life | : 50,000 hrs |
| Luminous Flux | : 100+ lm/w |
| Power Factor | : >0.97 |
| Color Temperature | : 3000-6500k |
| CRI | : >80 |
| Lumen Maintenance | : 100% upto 10,000 hrs |
| Lamp Body Material | : Pure aluminium, Tempered glass |
| Beam angle | : 60° |
| IP Grade | : IP 65/66 |
| Specialty | : High concentrated reflection plate |



■ SEL/FL-601



■ SEL/FL-602

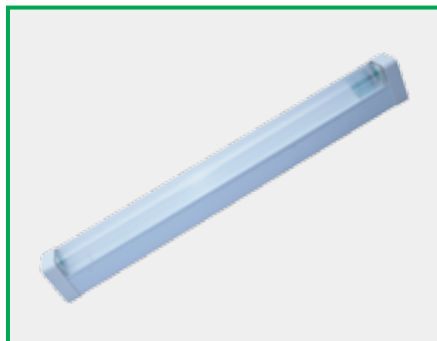


■ SEL/FL-603



■ SEL/FL-604

LED Fixture



■ SEL/LED/FIX-701



■ SEL/LED/FIX-702



■ SEL/LED/FIX-703



■ SEL/LED/FIX-704



■ SEL/LED/FIX-705



■ SEL/LED/FIX-706



■ SEL/LED/FIX-707



■ SEL/LED/FIX-708

LED Street Light

Description

| | |
|--------------------|----------------------------------|
| Brand | : SUNTECH |
| Available wattages | : 50w, 80w, 100w, 150w, 200w |
| Input Voltage | : AC 85V-265V, 50-60 Hz |
| LED type | : COB LED Light Source/SMD |
| Life span | : 50,000 hours |
| Luminous Flux | : 100+/w |
| Power Factor | : 0.95 |
| Color Temperature | : 2800-7500k |
| Power Efficiency | : 85% |
| CRI | : >80 |
| Lumen Maintenance | : 100% up to 10,000 hrs |
| Lamp Body Material | : Tempered glass, pure aluminium |
| Beam angle | : 130° |
| IP Grade | : IP65-IP67 |

Features

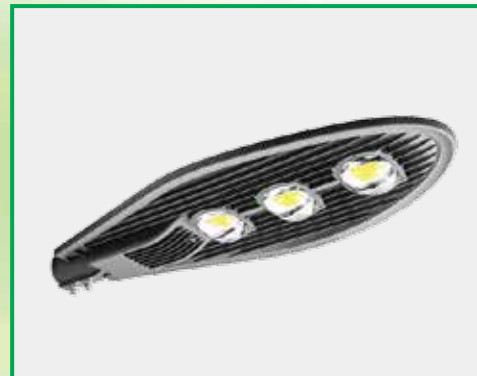
- High Heat conducting efficiency, low lumens depreciation, high light purity
- IP 65-IP67 standard, free from water, dust and corrosion
- Wide working voltage range, constant flow and pressure
- Environmental protection, no pollution of lead and Hg
- The decorative effect is wonderful, the surface adopted special process
- Shock and vibration proof



■ SEL/LED/SRT-801



■ SEL/LED/SRT-802

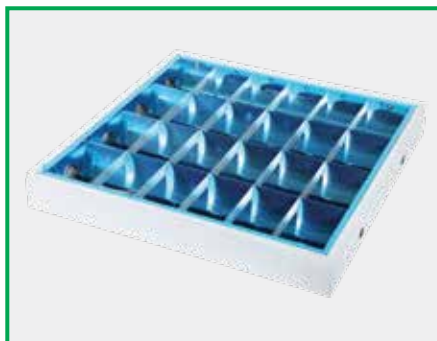


■ SEL/LED/SRT-803



■ SEL/LED/SRT-804

LED Louver Shade



■ SEL/LED/LOVRS-901



■ SEL/LED/LOVRS-902



■ SEL/LED/LOVRS-903



■ SEL/LED/LOVRS-904



■ SEL/LED/LOVRS-905



■ SEL/LED/LOVRS-906



■ SEL/LED/LOVRS-907



■ SEL/LED/LOVRS-908

LED Conceal Down Light



■ SEL/LED/CON/DL-1001



■ SEL/LED/CON/DL-1002



■ SEL/LED/CON/DL-1003



■ SEL/LED/CON/DL-1004



■ SEL/LED/CON/DL-1005



■ SEL/LED/CON/DL-1006

LED Surface Down Light



■ SEL/LED/SURF/DL-2001



■ SEL/LED/SURF/DL-2002



■ SEL/LED/SURF/DL-2003



■ SEL/LED/SURF/DL-2004



■ SEL/LED/SURF/DL-2005



■ SEL/LED/SURF/DL-2006

LED Conceal Spot Light



■ SEL/LED/CON/SPT-3001



■ SEL/LED/CON/SPT-3002



■ SEL/LED/CON/SPT-3003



■ SEL/LED/CON/SPT-3004



■ SEL/LED/CON/SPT-3005



■ SEL/LED/CON/SPT-3006



■ SEL/LED/CON/SPT-3007



■ SEL/LED/CON/SPT-3008

LED Conceal Spot Light



■ SEL/LED/CON/SPT-3009



■ SEL/LED/CON/SPT-3010



■ SEL/LED/CON/SPT-3011



■ SEL/LED/CON/SPT-3012



■ SEL/LED/CON/SPT-3013



■ SEL/LED/CON/SPT-3014

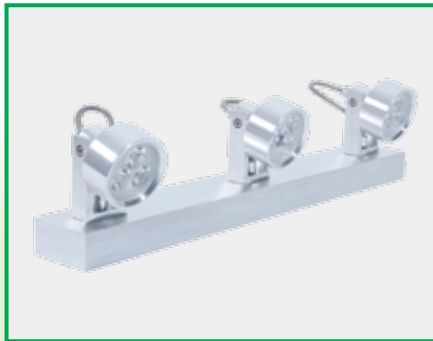


■ SEL/LED/CON/SPT-3015



■ SEL/LED/CON/SPT-3016

LED Wall Mounted Spot Light



■ SEL/LED/WM/SPT-4001



■ SEL/LED/WM/SPT-4002



■ SEL/LED/WM/SPT-4003



■ SEL/LED/WM/SPT-4004



■ SEL/LED/WM/SPT-4005



■ SEL/LED/WM/SPT-4006



■ SEL/LED/WM/SPT-4007



■ SEL/LED/WM/SPT-4008

LED Foot Light



■ SEL/LED/FOOT-5001



■ SEL/LED/FOOT-5002



■ SEL/LED/FOOT-5003



■ SEL/LED/FOOT-5004



■ SEL/LED/FOOT-5005



■ SEL/LED/FOOT-5006



■ SEL/LED/FOOT-5007

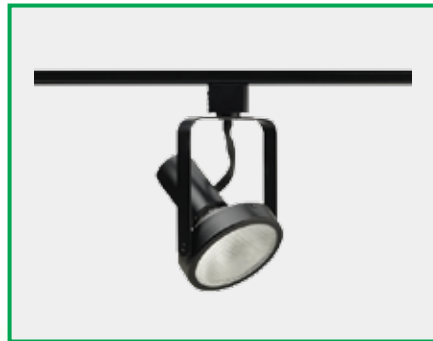


■ SEL/LED/FOOT-5008

LED Track Spot Light



■ SEL/LED/TRK/SPT-6001



■ SEL/LED/TRK/SPT-6002



■ SEL/LED/TRK/SPT-6003



■ SEL/LED/TRK/SPT-6004



■ SEL/LED/TRK/SPT-6005



■ SEL/LED/TRK/SPT-6006



SEL/LED/TRK/SPT-6007



■ SEL/LED/TRK/SPT-6008

LED Security Light



■ SEL/LED/SCRTY-7001



■ SEL/LED/SCRTY-7002



■ SEL/LED/SCRTY-7003



■ SEL/LED/SCRTY-7004



■ SEL/LED/SCRTY-7005



■ SEL/LED/SCRTY-7006

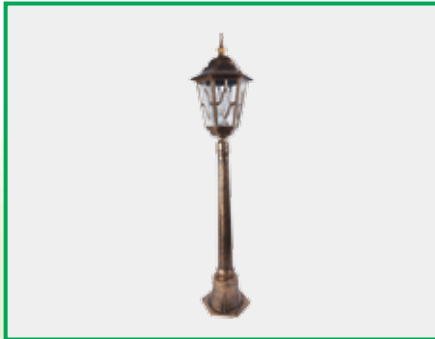


■ SEL/LED/SCRTY-7007



■ SEL/LED/SCRTY-7008

LED Garden Light



■ SEL/LED/GRDN-8001



■ SEL/LED/GRDN-8002



■ SEL/LED/GRDN-8003



■ SEL/LED/GRDN-8004



■ SEL/LED/GRDN-8005



■ SEL/LED/GRDN-8006



■ SEL/LED/GRDN-8007



■ SEL/LED/GRDN-8008

LED Emergency Light



■ SEL/LED/EM-9001



■ SEL/LED/EM-9002



■ SEL/LED/EM-9003



■ SEL/LED/EM-9004



■ SEL/LED/EM-9005



■ SEL/LED/EM-9006



■ SEL/LED/EM-9007



■ SEL/LED/EM-9008

SOLAR UNIT

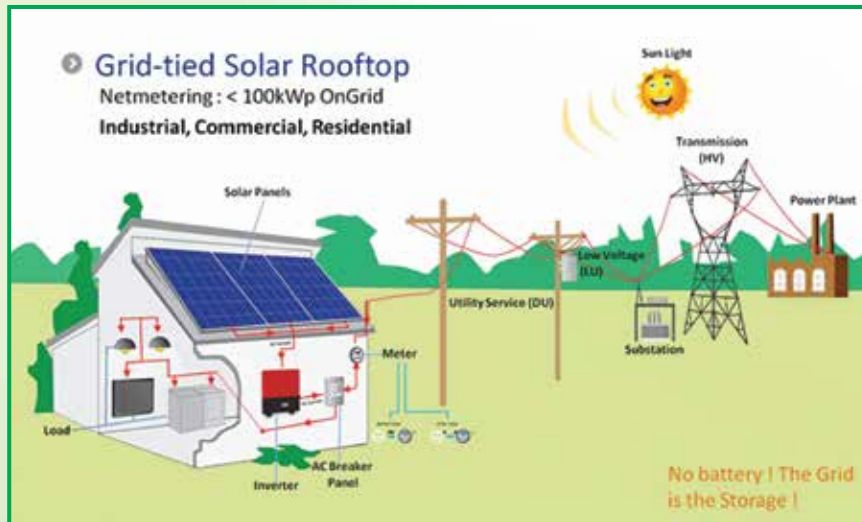
Grid Tie Roof top Solar Power System:



- A grid tie inverter is a special type of inverter that converts direct current electricity into alternating current electricity and feeds it directly into the existing electrical grid.
- The technical name for a grid tie inverter is "Grid-interactive inverter": That may also be called Synchronous inverter. Grid-inverter typically cannot be used in standalone application where utility power is not available.
- According to this system customers can sell power directly to the grid connection and that may help the government.

Advantages:

- The advantage of GTI's is that they are scalable, if you add more solar panels to your home you can simply add and additional GTI in parallel with your existing one to scale up your power handling capability.
- GTI is less expensive than a comparable system that uses a battery bank for electricity storage. Battery storage systems are expensive and also needs to be replaced at least once during the lifetime of a typical solar power system. By using a GTI, you are able to reduce your overall cost of solar energy.
- As there is no battery bank for grid tie inverter, Grid tie solar system will be most cost effective compare to all other solar system. PRDF has the capability to supply and install Solar Grid-tie System up to Megawatt Level.



Solar System for new electric connection

Solar System for new electric connection (any capacity):

A photovoltaic (PV) Cell is made of thin layers of Silicon based photo sensitive Semi-conductive materials.

Electrical charge (DC) is produced when sunlight is exposed on it. PRDF supplies and installs off Grid and on Grid these two types of solarelectric system .

Solar Hybrid/ Off Grid System:

A hybrid renewable energy system utilizes two or more production method, usually a renewable source (solar, wind etc.) and grid or generator. In hybrid system the renewable source, usually Solar energy is assigned as a primary and priority source of power generation and Grid or generator as a secondary source or less priority source when solar power is not available. On day time the solar panels keep charging directly the battery and does not require grid power. But, when the batteries get fully charged then PV module automatically switches into float position. So there is a possibility of wastage of generation from module.



SOLAR STAND ALONE



SEL/SOLAR/STAND/ALN-101



SEL/SOLAR/STAND/ALN-102

Solar Panel

10Wp to 320Wp
(Polycrystalline and Monocrystalline)



■ SEL/SOLAR/P

On grid Inverter and Off grid Inverter



■ SEL/GI/101



■ SEL/GI/102

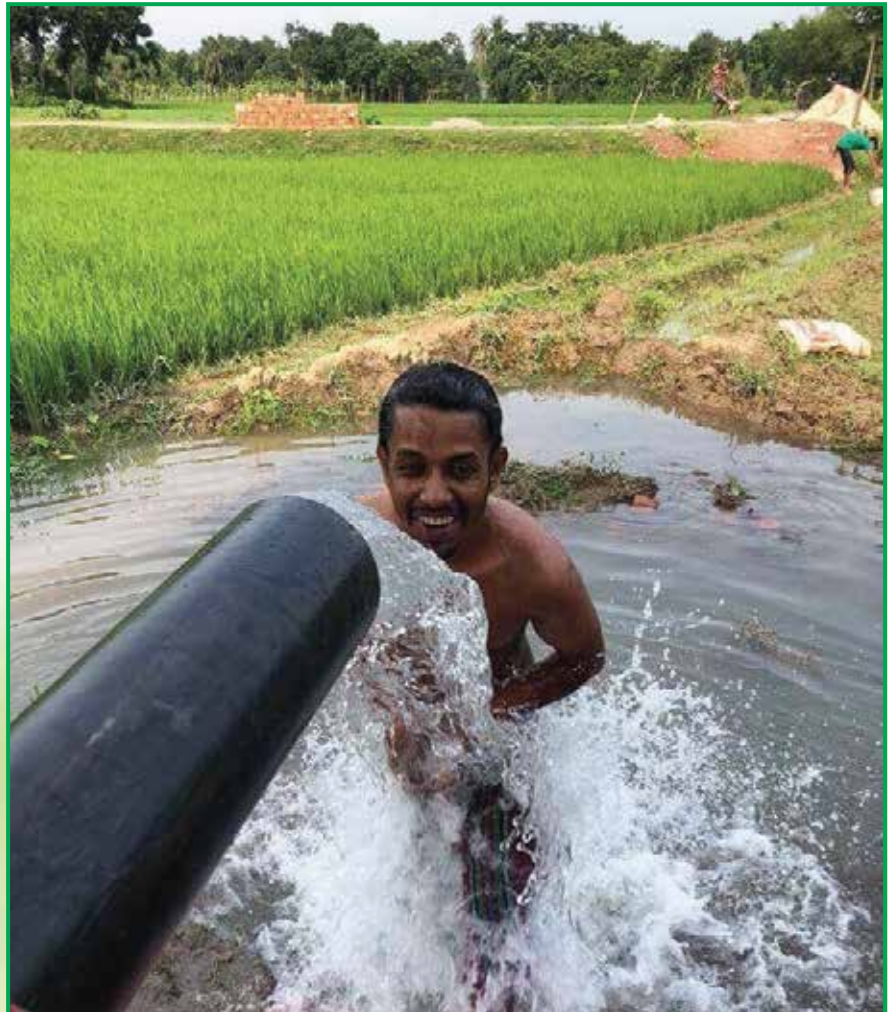


■ SEL/GI/103

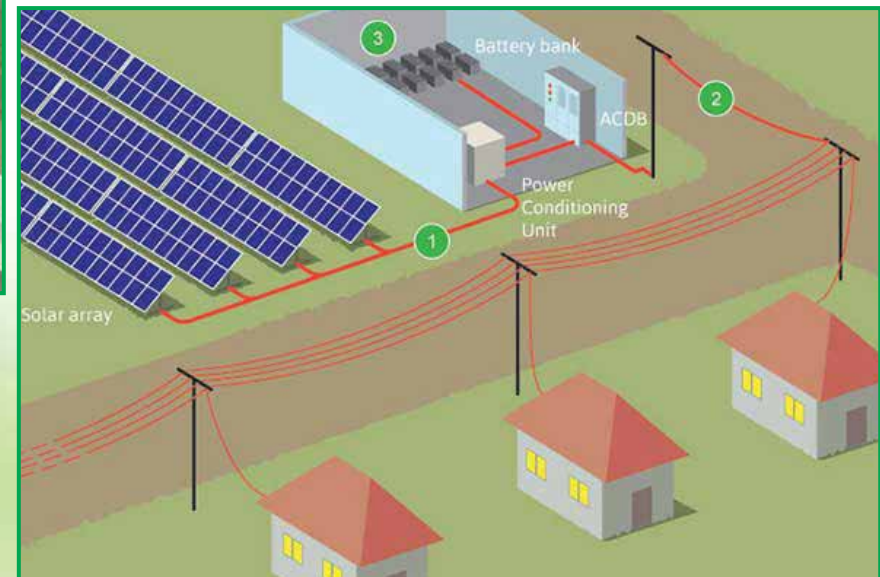


■ SEL/GI/104

Solar : Irrigation Plant



Solar: Mini-Grid





SUNTECH ENERGY LIMITED

A Concern of **SIM GROUP**

Corporate Office: House-315, Road-04, DOHS, Baridhara, Dhaka-1206

Tel: +88 02 8415961-3, Fax: +88 02 8415964, Mobile: 01711107384

Email: info-suntech@simgroup-bd.com, Web: www.simgroup-bd.com/suntech

Industry: Thakurbari Teac, Masumabad, Bhulta, Rupgonj, Narayangonj

Hotline: +8801708483442, +8801708483445, +8801708483444